



Full System Installation Guide

Honda CB650F

Index of contents

| | |
|-----------------------------------|---------|
| Suitable Models | Page 3 |
| General information | Page 3 |
| Removal of stock exhausts system: | Page 5 |
| Installation | Page 6 |
| Warranty terms | Page 9 |
| Trouble shooting guide | Page 10 |
| Cleaning guidelines | Page 10 |

Suitable Models

This product is suitable for the following models

- HONDA CB650F(2014-2018)
- HONDA CBR650F(2014-2018)

General information

Please ride your motorcycle responsibly & safely, while always abiding by local traffic regulations.

All statements made with regard to the exhaust system's compliance are made in respect of the exhaust system 'as is'. Any modifications of the Lextek exhaust system or its improper installation, use or maintenance that is not in accordance with this Installation guide, may result in severe damage to the exhaust system and/ or engine, as well as personal injury, and may affect the exhaust system's compliance with the legal requirements, such as exhaust system's air and/ or noise emissions (as an example, the motorcycle may not be suitable for use on public roads any longer), as well as warranty overage.

The exhaust system may only be used in accordance with relevant laws and regulations, including state and federal, where applicable. Damage caused by improper installation, use and maintenance of the Lexteks exhaust system is not covered by the Lextek lifetime warranty.

Technical specifications of Lextek exhaust systems and related products are subject to change without notice.

NOISE AND EMISSION WARNINGS.

General warning.

Lextek products are distributed world-wide, Lextek Exhausts or any agent working on behalf of Lextek doesn't make any representation that the exhaust system complies with the air and/or noise emissions laws unless confirmed in writing. The buyer is responsible to check the applicable laws where the products are to be used and to ensure they comply with those laws.

USA INFORMATION (EXCLUDING CALIFORNIA)

Different U.S. states have individual laws regulating the use of aftermarket exhausts, especially as any that modify, remove, or replace original catalysts.

Please check the appropriate laws in your area before installing any Lextek Exhaust and/or system on your vehicle. Lextek Exhausts or any agent working on behalf of Lextek do not make any representation that any Lextek Exhaust or system will comply with any such laws.

CALIFORNIA INFORMATION

The law in California prohibit the use of any aftermarket exhaust part or system that modifies, removes or replaces original equipment catalysts unless an executive Order has been issued by California Air Resources Board. The only exception to this rule is if the exhaust is being used only on a race track on a closed circuit. Lextek Exhausts or any agent working on behalf of Lextek do not make any representation that any Lextek Exhaust or system have received the applicable

Page 3

Executive Order. The purchasers are solely responsible for ensuring compliance with the applicable Californian law.

Removal of stock exhausts system:

Warning!

Exhaust components will be hot after riding.

Please ensure that your motorcycle exhaust has had sufficient time to fully cool down before starting to disassemble any exhaust components.

Tools:

Ensure you have a basic set of tools including a socket set and hex keys. As a precaution we advise customers to wear protective gloves and/or other essential clothing.

REMOVING THE O.E EXHAUST.

Preparation: Spray all bolts and joints with a penetrating spray and allow time to work.

Exhaust Valve: If your motorcycle has an exhaust valve, this will need to be disconnected.

Detailed instructions for this will be included within the product documentation.

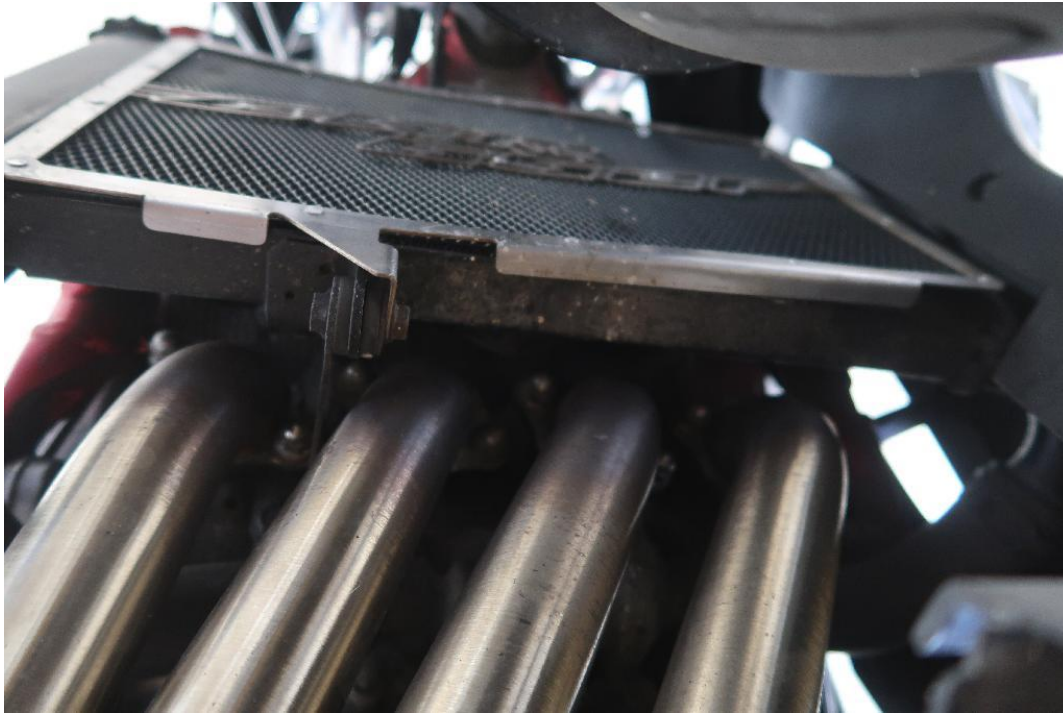
Lambda Sensor: Disconnect Lambda cable or remove from the pipework if necessary. NOTE: In some circumstances it may be necessary to remove components to gain access to clamps/fixings etc.

Removal of Exhaust System: Remove the original exhaust system starting from the back of the motorcycle and working to the front. Original exhaust systems can be heavy due to the materials they are made from, and the size of silencers. Take care when removing the exhaust to avoid any damage to your motorcycle.

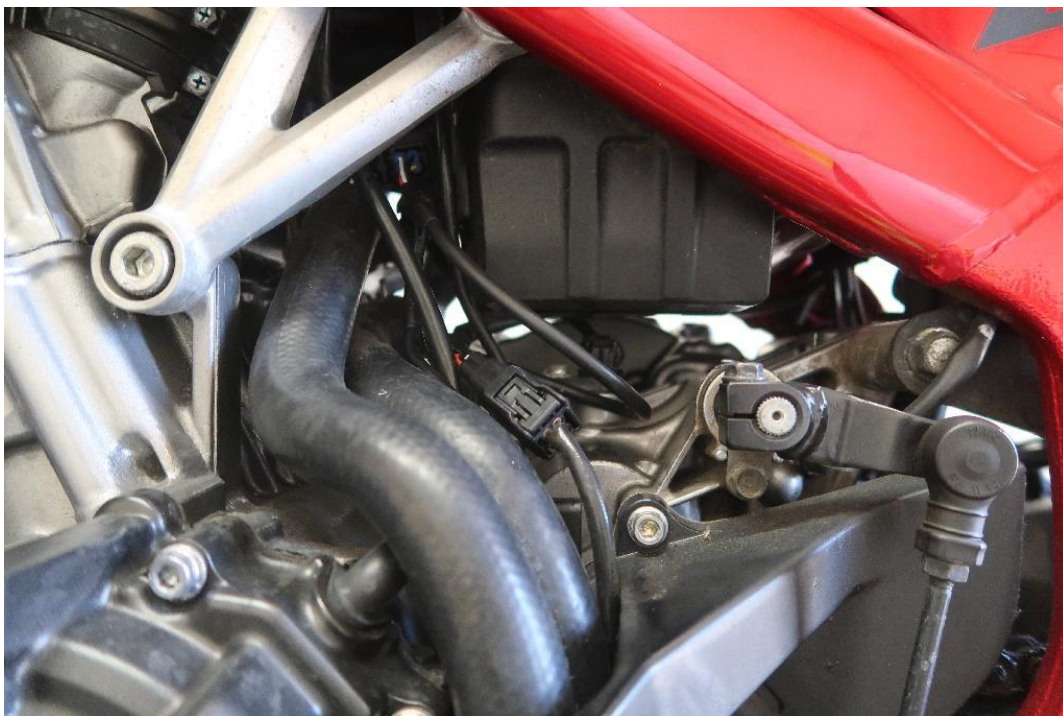
Installation

Insert the exhaust gaskets (supplied) into the header ports

Place the front section of the headers into the exhaust ports and tighten the exhaust nuts. Please ensure at this point of the process they are only finger tight.



Disconnect the lambda sensor from the main harness and using the lambda sensor extension cable (supplied) connect 1 end to the harness and the other to the OEM lambda sensor.



Connect the collector to the headers using the exhaust springs (supplied) as previously installed.

Re-install the lambda sensor into the downpipe, finger tight at this stage. Please note the original cable routing when the system was removed.

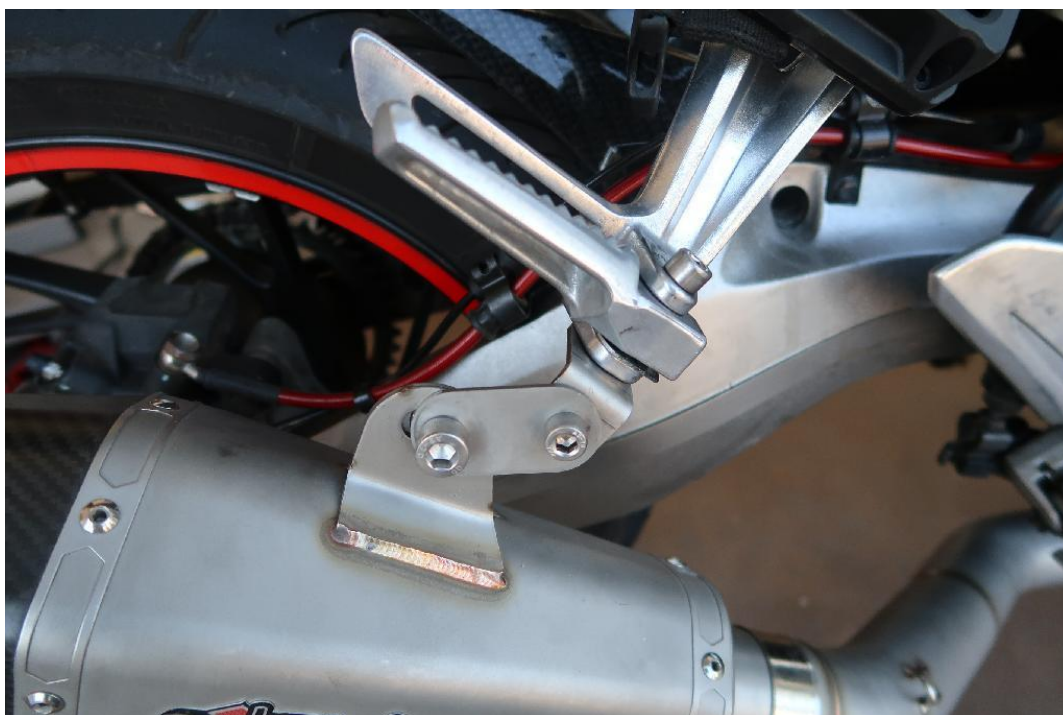


Tighten the header ports to 20Nm per nut.

Using the bolt and nut (supplied) remplace the pin the holds the pillion footpeg and add the exhaust mounting bracket (supplied).



Mount your new Lextek Silencer to the downpipe and line the mounting point on the silencer to bracket (installed earlier). Secure the silencer using the clamp to a torque of 12Nm.



Warranty terms

All Lextek Motorcycle Products exhaust systems are supplied with a lifetime warranty against defects in workmanship and/or materials.

Who is covered:

The Lifetime warranty is only provided to the original purchaser of the exhaust system.

What Voids the Warranty?

1. Modification of an existing system to suit Custom applications
2. No proof of purchase at the time of warranty. The claimant must provide proof of purchase (original receipt or invoice) and have registered their warranty on the Lextek Products website (URL: <https://www.lextekproducts.com/register-here>).
3. Incorrect installation, abuse, misuse, and modifications.
4. Finishes such as plating or painted surfaces with discoloration or rust due to inclement weather conditions, exposure to salt, exposure to chemicals, or lack of maintenance by the customer are not covered.
5. Electrical parts are not covered under warranty.

Extent of Warranty:

Lextek Motorcycle Products are not responsible for any expense incurred by the customer/dealer under the terms of the Lifetime Warranty, nor is Lextek Motorcycle Products responsible for any damages consequential, incidental along with any expenses or injury directly or indirectly incurred from the use of the exhaust system. Lextek Motorcycle Products reserves its rights to decide if the terms of the warranty as set out above have been correctly followed.

In the event that the terms have not been followed then Lextek Motorcycle Products will deem the warranty void. Lextek Motorcycle Products will make the final decision if the warranty is void due to abuse, misuse, installation errors and modifications - should any of these be found, this warranty will be void. The warranty gives you specific legal rights and you may have other rights, which vary from state to state.

For International customers, please contact your dealer or distributor regarding warranties.

Technical Questions:

See your local dealer or contact Lextek Motorcycle Product directly at <https://www.lextekproducts.com/contact>

Trouble shooting guide

If you are having fitment issue or other problems please double-check this trouble shooting guide first:

Before contacting the seller/distributor/manufacture please check the whole installation guide:

1. Check all joints and ensure the clamps supplied are correctly installed (refer to the installation guide). On many models, there is a right and wrong way to install.
2. Always install spring-mounted manifolds and flanges onto cylinder head prior to installing headers and the rest of the exhaust system.
3. When a problem is found please systematically check the system, contents and instructions.
4. When all else fails, please follow the process below:
 - a. Contact the selling dealer or local distributor,
 - b. Contact Lextek Motorcycle Products via the website <https://www.lextekproducts.com/contact> or via Social Media (Facebook or Instagram).

If you are missing a part then please contact your selling dealer or local distributor.

Technical Questions:

See your local dealer or contact Lextek Motorcycle Product directly at <https://www.lextekproducts.com/contact>.

Cleaning guidelines

Stainless Steel: To clean stainless steel components use a soft cloth sprayed with contact cleaner, then wipe with soft and dry cloth.

Carbon Fibre: To clean carbon fibre only use a soft and dry cloth with no chemicals.

Titanium: To clean titanium use a multi-purpose spray lubricant and wipe with soft and dry cloth. Do not use aggressive chemical cleaners as they will damage the product. A change in the colour of the exhaust system is normal due to the high temperatures.

The exhaust packing material may become worn out and need replacing, the time scale/mileage can vary depending on the type of the engine and riding style.

Contact your local dealer/distributor if visible colour changes appear on muffler's outer sleeve and/or the noise level is increased.